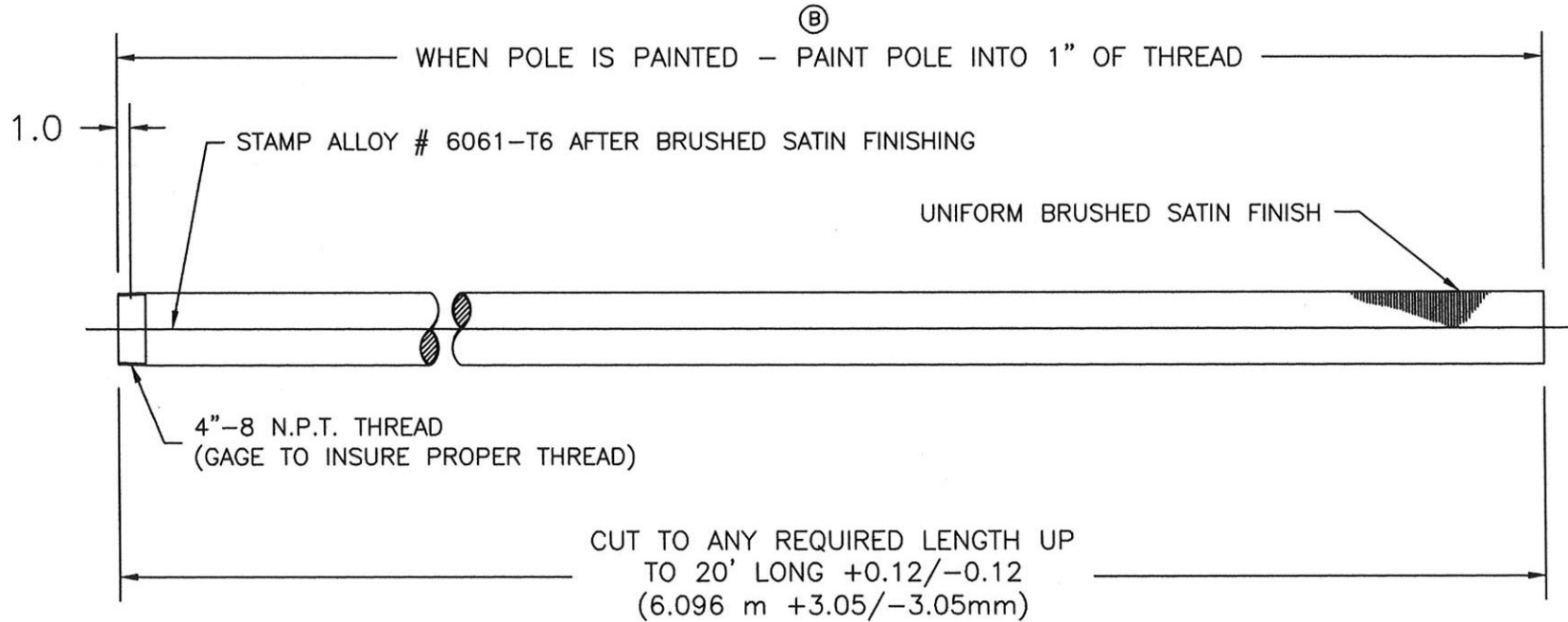


DO NOT ALLOW CARDBOARD PROTECTING TUBE TO GET WET



POLE TO BE SHIPPED IN CARDBOARD PROTECTING TUBE WITH PLASTIC THREAD PROTECTOR

JOB# 2323 X LENGTH OF POLE

DO NOT SCALE PRINT

TOLERANCES Unless Otherwise Specified	
.X	±.015
.XX	±.010
.XXX	±.005
ANG.	±1/2°
FRAC.	±1/64

B	PAINT DIM. ADDED		R.S.	8/13/99
A	ENGINEERING RELEASE			
REV.	DESCRIPTION	BY	DATE	
AKRON FOUNDRY CO. AKRON, OHIO				
DRAWN BY	R. SIK	APPROVED BY	SCALE	1 : 8
DATE	9 /10 /05	DATE APPROVED	PAGE	1 OF 1
DESCRIPTION	4" DIA. ALUMINUM THREADED PIPE SCHED. 40 MAT. 6061-T6			

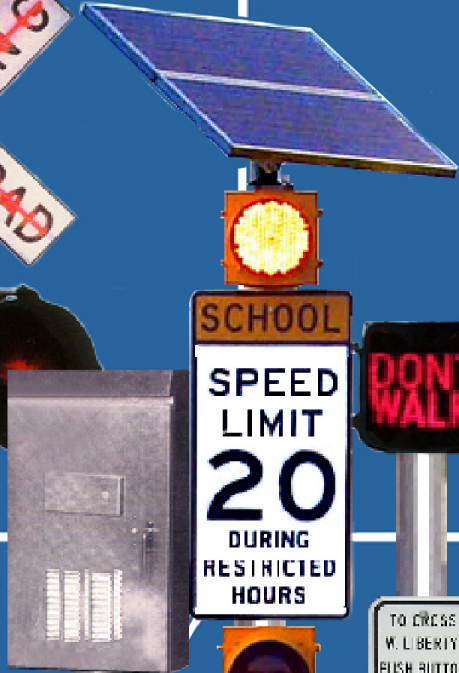
**SPECIAL
SEE SHIPPING INSTRUCTIONS**

DWGFILE.NAME	MATERIAL	MATERIAL	CAT. NO.	DWG. NO.	TS-1000 POLE
--------------	----------	----------	----------	----------	--------------

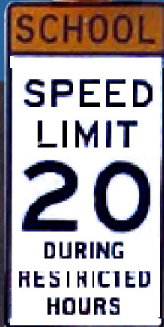
QUALITY ALUMINUM PEDESTAL BASES POLES ACCESSORIES ASSHTO APPROVED



RAILROAD
CROSSING



CONTROL
PANEL



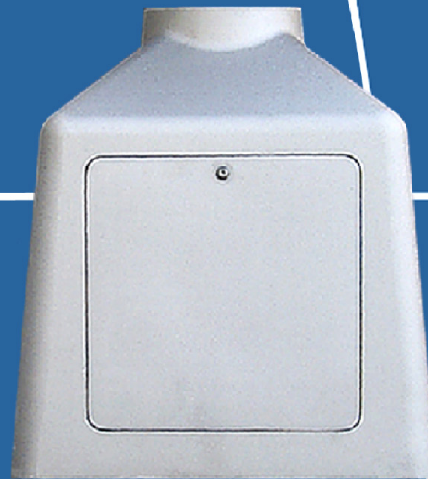
SOLAR



PEDESTRIAN



TRAFFIC



TS-1000



TS-1000L



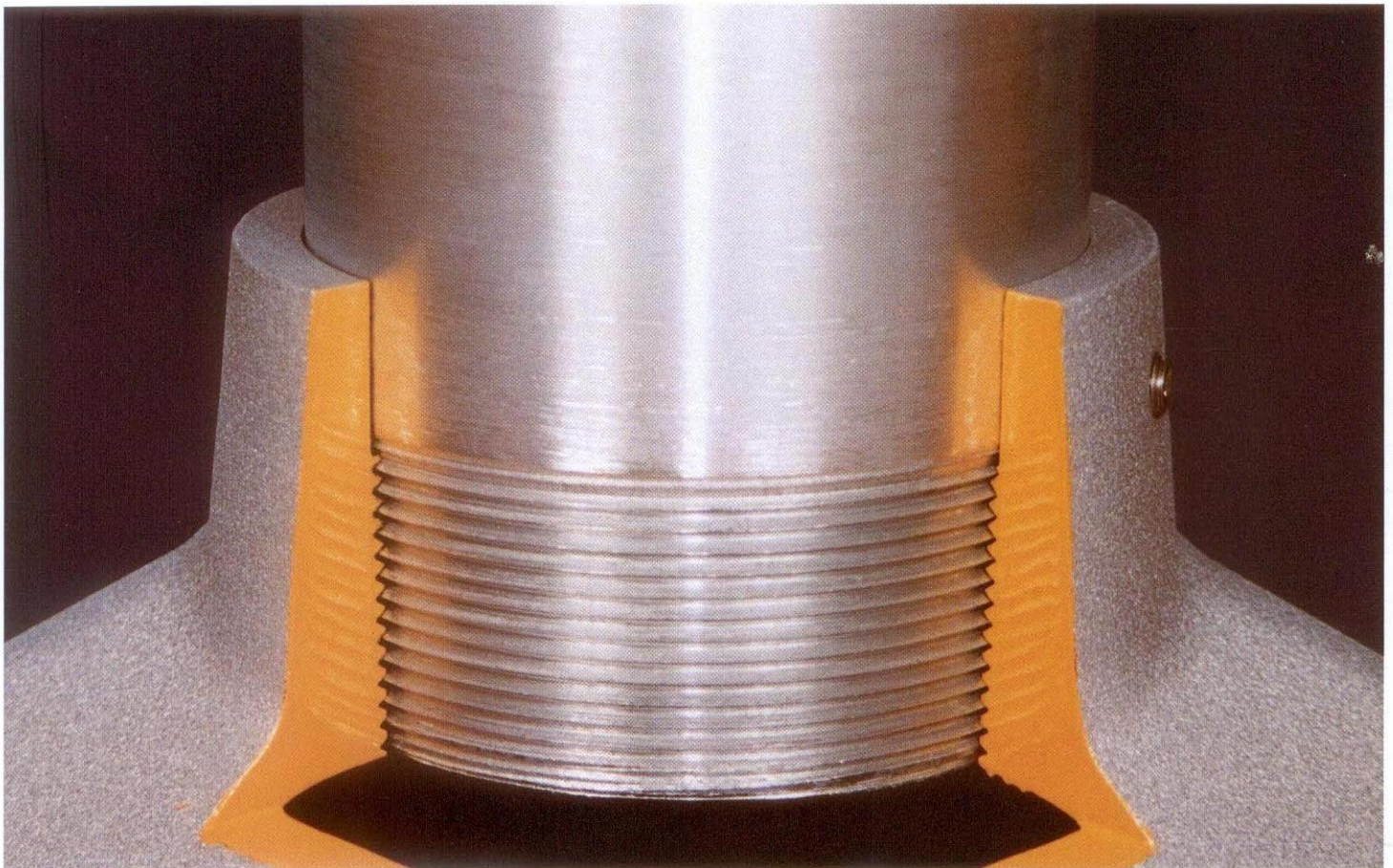
AKRON FOUNDRY COMPANY

2728 WINGATE AVE.
AKRON, OHIO 44314

Phone: (330) 745-3101 Fax: (330) 745-7999

ORDERING INFORMATION

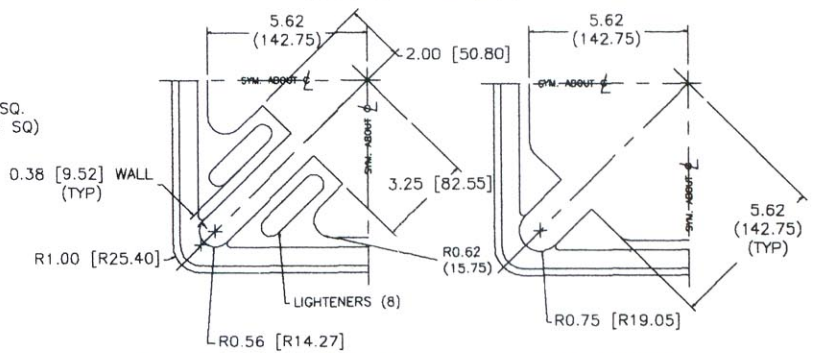
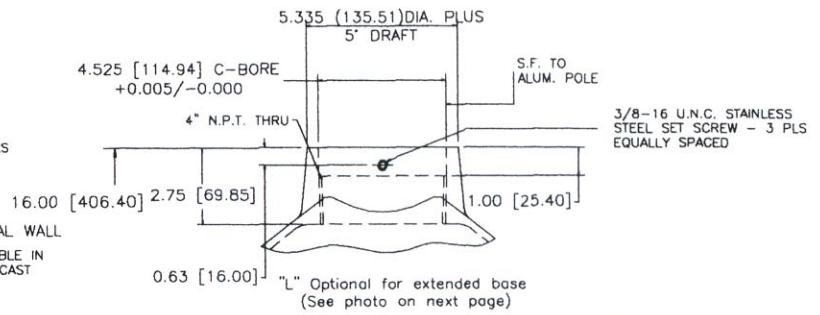
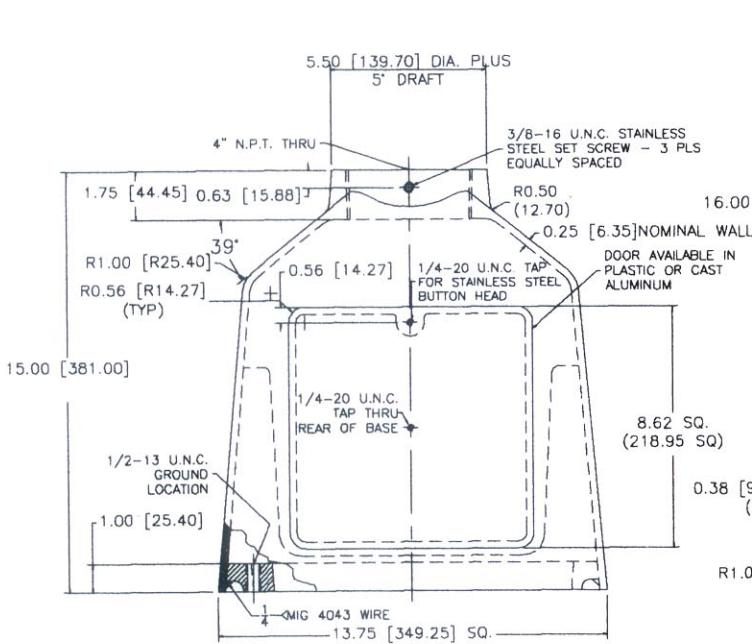
PART NUMBER	BOTTOM BOLT CIRCLE	HEIGHT	POLE SIZE
* TS-1000	12.75" Dia. Thru 15.00" Dia. B.C.	15.00"	4" NPT
* TS-1000-L	12.75" Dia. Thru 15.00" Dia. B.C.	16.00"	4" NPT (4.525" C-Bore)
* TS-1000 Modified	8.00" Dia. Thru 15.00" Dia. B.C.	15.00"	4" NPT
* TS-1000-L Modified	8.00" Dia. Thru 15.00" Dia. B.C.	16.00"	4" NPT (4.525" C-Bore)
Heavy Duty Flange Base	7 1/4" Dia. B.C. (3) 7/16 or 13/16 Bolt Dia.		4" NPT
Acorn Pole Cap	(3) 1/4-20 UNC Set Screws (Supplied)		4 1/2" I.D.
Dome Pole Cap	Press Fit (Set Screws Not Required)		4 1/2" I.D.
WASHERS: Steel Zinc Mechanical Coated Per ASTM B-695-85 Class 50 2.50" O.D. x 13/16" I.D. x .25" Thick 2.50" O.D. x 1 1/16" I.D. x .25" Thick			
* Plastic Doors Available Upon Request (Add Suffix "P"). * Special I.D. Bore and Stainless Steel Hinged Door Available Upon Request.			



CAUTION: THIS BASE DESIGN REQUIRES CONCENTRICITY OF POLE O.D. & THREAD WITHIN 0.010 T.I.R. AS SUPPLIED BY AKRON FOUNDRY.

See Back Cover For Standard Pole Features.

**APPROVED BY F.H.W.A. TO 1985 AASHTO REQUIREMENTS.
MADE IN U.S.A.**

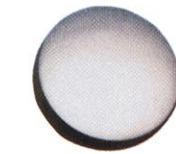


TS-1000 Modified
8.00" Dia. Thru 15.00" Dia. B.C.

TS-1000
12.75" Dia. Thru 15.00" Dia. B.C.

FEATURES

- (3) 3/8" -16 U.N.C. STAINLESS STEEL SET SCREWS.
- 8.50" SQUARE ACCESS DOOR (PLASTIC OR ALUMINUM) WITH 1/4" -20 U.N.C. STAINLESS STEEL SCREW TO CUSTOMER SPECIFICATION.
- (2) THREADED GROUND HOLES 1/2" -13 U.N.C. & 1/4" -20 U.N.C.
- MATERIAL: 356 T6 ALUMINUM ALLOY.
- STAINLESS STEEL BLASTED FOR UNIFORM FINISH.
- PERSONALIZED LOGO DOORS AVAILABLE UPON REQUEST.
- OPTIONAL SPECIAL I.D. BORES TO CUSTOMER SPECIFICATIONS.
- PAINTING AVAILABLE UPON REQUEST.



Dome Pole Cap



Acorn Pole Cap



Heavy Duty Flange Base

