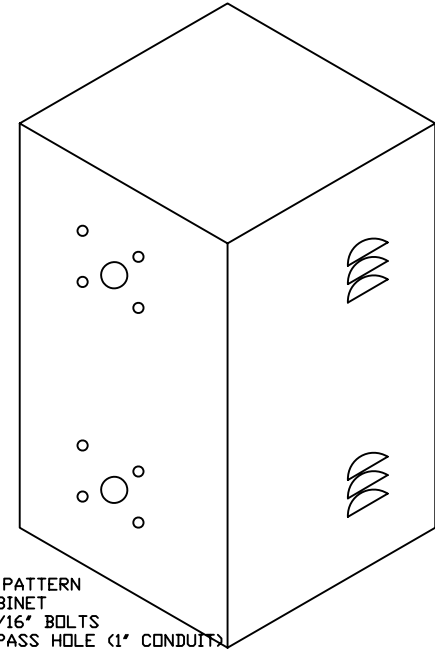
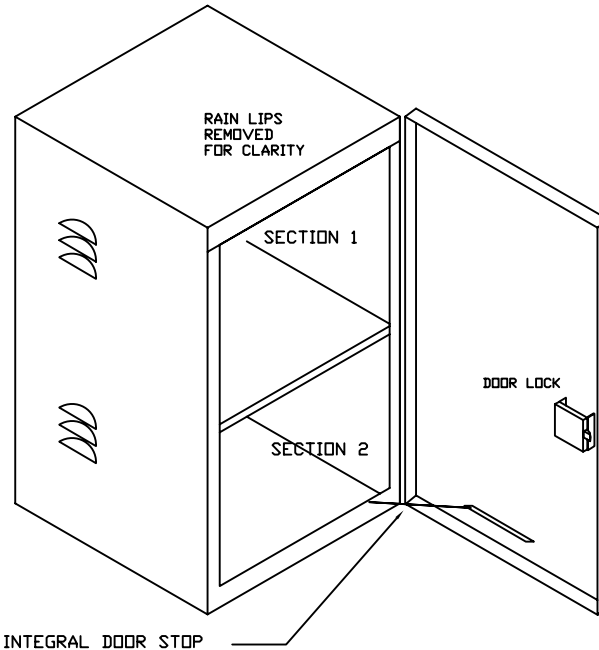


2B2C- TWO BATTERY TRAFFIC CABINET WITH 6 ALUMINUM SCREENED VENTS PER SIDE, SINGLE PIECE DOOR, POLICE LOCK WITH COVER FOR KEYHOLE, FOAM GASKETED DOOR, 0.125" THICK ALUMINUM MATERIAL PELCO CABINET MOUNTS, BOTTOM LEXAN WINDOW FOR NIGHT DIMMING FUNCTION, AND SEPARATE SECTIONS FOR BATTERIES AND ELECTRONICS. DOOR IS ATTACHED TO THE CABINET WITH AN SS PIANO HINGE. NO RIVETS VISIBLE TO EXTERIOR WITH DOOR CLOSED.



MOUNTING HOLE PATTERN ON REAR OF CABINET
4-HOLES FOR 5/16" BOLTS
AND ONE WIRE PASS HOLE (1" CONDUIT)



RAIN LIPS REMOVED FOR CLARITY

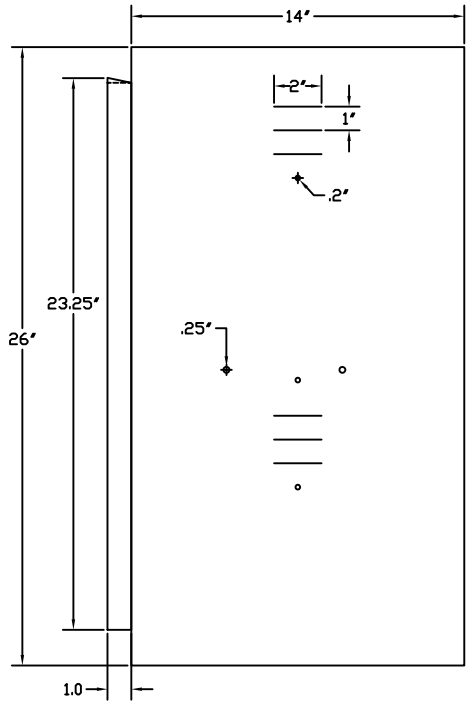
SECTION 1

SECTION 2

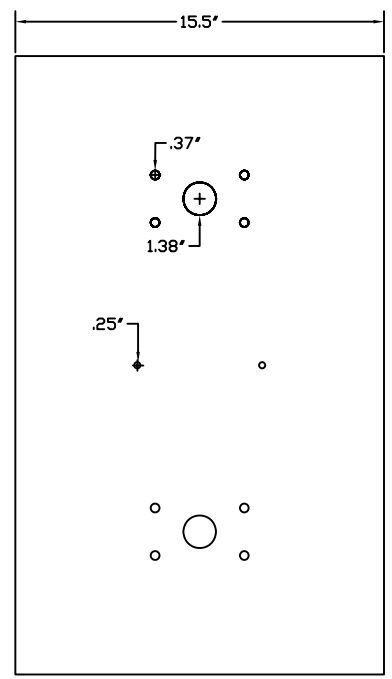
DOOR LOCK

INTEGRAL DOOR STOP

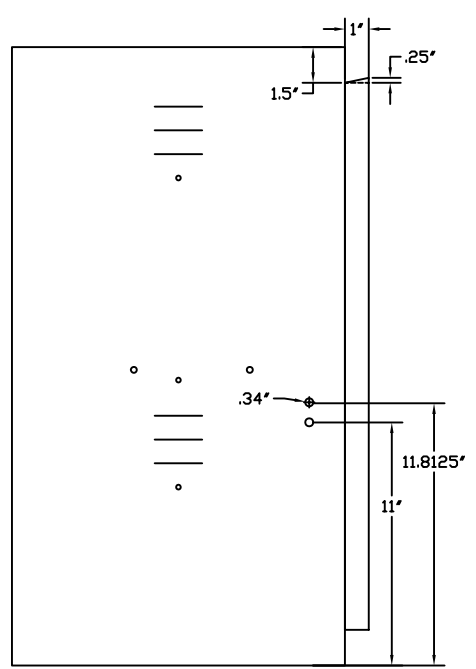
MATERIAL: 5052-H32 AL PVC COVERED		SOLAR TRAFFIC CONTROLS, L.L.C.		
THICKNESS: 0.125"		2 BATTERY TRAFFIC ENCLOSURE		
TOLERANCE: +/- .005"		SIZE	FSCM NO.	DWG NO.
				REV -
		SCALE		SHEET 7 OF 7



LEFT SIDE OF CABINET

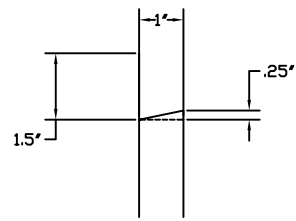
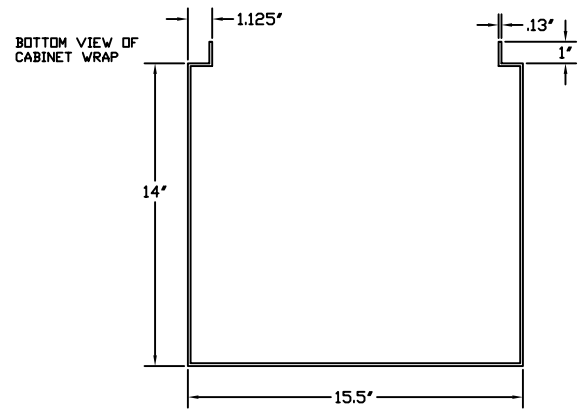


BACK OF CABINET



RIGHT SIDE OF CABINET

2B CABINET BODY
RIGHT, BACK, LEFT
AND TOP VIEW



PROPRIETARY INFORMATION
THE INFORMATION CONTAINED IN THIS DRAWING IS PROPERTY OF SOLAR TRAFFIC CONTROLS AND IS TO BE KEPT CONFIDENTIAL. THIS DRAWING IS PROVIDED FOR ENGINEERING REVIEW FOR THE PROJECT AT HAND AND IS NOT TO BE DISCLOSED TO THIRD PARTIES WITHOUT PRIOR WRITTEN NOTICE FROM SOLAR TRAFFIC CONTROLS

MATERIAL: 5052-H32 AL PVC COVERED	SOLAR TRAFFIC CONTROLS, L.L.C.			
THICKNESS: 0.125"	2 BATTERY TRAFFIC ENCLOSURE			
TOLERANCE: +/- .005"	SIZE	FSCM NO.	DWG NO.	REV
				-
	SCALE		SHEET 5 OF 7	